



Andy Beshear
GOVERNOR

TRANSPORTATION CABINET

200 Mero Street
Frankfort, Kentucky 40601

Jim Gray
SECRETARY

February 18, 2025

CALL NO. 106
CONTRACT ID NO. 254502
ADDENDUM # 1

Subject: Warren County, HSIP 0801 (118)
Letting February 20, 2025

- (1) Revised - Summary Sheet - Pages 68 & 72-75 of 179
- (2) Revised - Signing Plans - Pages 94-96 of 179
- (3) Revised - Proposal Bid Items - Pages 178-179 of 179
- (4) Revised - Plans in Project Related Information

Proposal revisions are available at <http://transportation.ky.gov/Construction-Procurement/>.

If you have any questions, please contact us at 502-564-3500.

Sincerely,

A handwritten signature in black ink that reads "Rachel Mills".

Rachel Mills, P.E.
Director
Division of Construction Procurement

RM:mr
Enclosures

ITEM	DESCRIPTION	NOTE(S)	UNIT	US 68	KY 242	ROCKFIELD BROWNING ROAD	TOTAL PROJECT
00003	CRUSHED STONE BASE	1	TON	4199			4199
00100	ASPHALT SEAL AGGREGATE	1	TON	23			23
00103	ASPHALT SEAL COAT	1	TON	3			3
00190	LEVELING & WEDGING PG64-22	1	TON	204	3	5	212
00217	CL4 ASPH BASE 1.00D PG64-22	1	TON	3460			3460
00337	CL4 ASPH SURF 0.388 PG76-22	1	TON	2559	21	43	2623
00462	CULVERT PIPE 18 IN	2	LF	61			61
01921	STANDARD BARRIER MEDIUM TYPE 4		SQYD	351			351
02230	EMBANKMENT IN PLACE		CUYD	5707			5707
02562	TEMPORARY SIGNS		SQFT	328			328
02569	DEMobilIZATION		LS	1			1
02604	FABRIC-GEOTEXTILE CLASS 1A	1	SQYD	5974			5974
02650	MAINTAIN & CONTROL TRAFFIC		LS	1			1
02671	PORTABLE CHANGEABLE MESSAGE SIGN		EACH	4			4
02676	MOBILIZATION FOR MILL & TEXT		LS	1			1
02677	ASPHALT PAVE MILLING & TEXTURING	1	TON	2035	21	43	2099
02696	SHOULDER RUMBLE STRIPS		LF	11504			11504
02701	TEMP SILT FENCE		LF	5752			5752
02703	SILT TRAP TYPE A		EACH	4			4
02704	SILT TRAP TYPE B		EACH	4			4
02705	SILT TRAP TYPE C		EACH	4			4
02706	CLEAN SILT TRAP TYPE A		EACH	12			12
02707	CLEAN SILT TRAP TYPE B		EACH	12			12
02708	CLEAN SILT TRAP TYPE C		EACH	12			12
02726	STAKING		LS	1			1
02775	ARROW PANEL		EACH	4			4
03225	TUBULAR MARKERS		EACH	45			45
05950	EROSION CONTROL BLANKET		SQYD	750			750
05952	TEMP MULCH		SQYD	4225			4225
05953	TEMP SEEDING AND PROTECTION		SQYD	4225			4225
05963	INITIAL FERTILIZER		TON	1			1
05964	MAINTENANCE FERTILIZER		TON	1			1
05985	SEEDING AND PROTECTION		SQYD	4225			4225
05992	AGRICULTURAL LIMESTONE		TON	3			3
06406	SBM ALUM SHEET SIGNS .080 IN	3	SQFT	404.32			404.32
06407	SBM ALUM SHEET SIGNS .125 IN	3	SQFT	191.01			191.01
06410	STEEL POST TYPE 1	3	LF	703			703

ITEM	DESCRIPTION	NOTE(S)	UNIT	US 68	KY 242	ROCKFIELD BROWNING ROAD	TOTAL PROJECT
06490	CLASS A CONCRETE FOR SIGNS	3	CUYD	2.75			2.75
06511	PAVE STRIPING-TEMP PAINT-6 IN	4	LF	17220	200	140	17560
06542	PAVE STRIPING-THERMO-6 IN W	4	LF	11384			11384
06543	PAVE STRIPING-THERMO-6 IN Y	4	LF	5911	184	234	6329
06568	PAVE MARKING-THERMO STOP BAR-24IN	4	LF	14	12	14	26
06574	PAVE MARKING-THERMO CURV ARROW	4	EACH	14	2	2	18
06576	PAVE MARKING-THERMO ONLY	4	EACH	1	1	1	3
10020NS	FUEL ADJUSTMENT		DOLL	9798			9798
10030NS	ASPHALT ADJUSTMENT		DOLL	24611			24611
20071EC	JOINT ADHESIVE	1	LF	3074			3074
21289ED	LONGITUDINAL EDGE KEY		LF	3510			3510
21596ND	GMISS TYPE D	3	EACH	11			11
21541NN	CORED HOLE DRAINAGE BOX CON-18 IN		EACH	1			1
22680EN	OWICK CURB MEDIUM SEPARATOR		LF	157			157
24489EC	INLAID PAVEMENT MARKER		EACH	141			141
24631EC	BARCODE SIGN INVENTORY	3	EACH	96			96
24679ED	PAVE MARK THERMO CHEYRON	4	SQFT	331	152	149	632
24889EC	PAVE MARKING-THERMO U-TURN	4	EACH	17			17
24969ED	LONGITUDINAL SAW CUT		LF	3510			3510
24970EC	ASPHALT MATERIAL FOR TACK NON-TRACKING	1	TON	11	1	1	13
26131ED	SLOPED AND MITERED HEADWALL-18 IN	2	EACH	1			1

NOTES

- 1 CARRIED OVER FROM PAVING SUMMARY
- 2 CARRIED OVER FROM PIPE DRAINAGE SUMMARY
- 3 CARRIED OVER FROM SIGNAGE SUMMARY
- 4 CARRIED OVER FROM STRIPING SUMMARY

DRAWING TITLE: GENERAL SUMMARY

COMMONWEALTH OF KENTUCKY
DEPARTMENT OF HIGHWAYS

COUNTY OF WARREN
ITEM NO. 03-93500
SHEET NO. R2

OpenRoads Designer V10.10.2.877 FILE NAME: C:\BRS\WAC\454\W200991519\3 - US 68 RCOT GENERAL SUMMARY.TXT17.DGN USER: ur8729380

Sign Summary										WARREN County										Route US 68									
Assembly ID	Side of Road	SIGN LOCATION			Facing Traffic Traveling	MUTCD Code	Sign Description	Sign Text / Remarks	Sign Dimensions (in x in)	SHEETING		SBM Alum Sheet Signs (SQ.FT)	SBM Alum Sheet Signs (SQ.FT)	Installation Type	Bracing Req'd	# of Sign Posts	Estimated Length of 2" Post (ft)	Estimated Length of 2-1/2" Post (ft)	2-1/4" Stiffener Req'd (incontl to post)	TOTAL Estimated Sign Post Length (LF)	Barcode Sign Inv. (EACH)								
		Approx Offset (ft)	Approx Station	Approx. Mile Point						Text/ Symbol Color	Background Color											Sheeting Type	Sheet Signs 0.080 IN (SQ.FT)	Sheet Signs 0.125 IN (SQ.FT)					
S-11 (CONT.)					M6-1R	Right Arrow		21 x 15	Black	White	XI	2.19		Yes						1									
					R6-1R	One Way		36 x 12	Black	White	XI	3.00		Yes						1									
S-12	RT	45	49+31	3.093	R6-1R	One Way		36 x 12	Black	White	XI	3.00	Std w/ Soil Plate		1	14				14									
S-13	RT	**	**	**	R1-1	Stop		36 x 36	White	Red	XI	9.00								1									
	RT	**	**	**	R3-5R	Right Turn ONLY		30 x 36	Black	White	XI	7.50								1									
	RT	**	**	**	M3-4	West		24 x 12	Black	White	XI	2.00	Std w/ Soil Plate	Yes	1	16				16									
					M5-1R	US Route Sign (1 or 2 digit)	68	24 x 24	Black	White	XI	4.00	Std w/ Soil Plate	Yes						1									
S-14					M4-5	Advance Right Turn Arrow To East		21 x 15	Black	White	XI	2.19		Yes						1									
					M3-2	East		24 x 12	Black	White	XI	2.00		Yes						1									
					M1-4	US Route Sign (1 or 2 digit)	68	24 x 24	Black	White	XI	4.00		Yes						1									
					M5-1R	Advance Right Turn Arrow		21 x 15	Black	White	XI	2.19		Yes						1									
S-15	RT	**	**	**	M2-1	Junction		21 x 15	Black	White	XI	2.19	Std w/ Soil Plate	Yes	1	14				14									
					M1-4	US Route Sign (1 or 2 digit)	68	24 x 24	Black	White	XI	4.00								1									
S-16	RT	**	**	**	W3-1	Stop Ahead		30 x 30	Red & Black	Yellow	XI	6.25	Std w/ Soil Plate							1									
S-17	LT	8	108+86	3.107	R3-2	No Left Turn		36 x 36	Red & Black	White	XI	9.00	Std w/ Soil Plate							1									
S-18	RT	12	109+60	3.121	R5-1	Do Not Enter		36 x 36	White	Red	XI	9.00	Std w/ Soil Plate							1									
S-19	LT	65	109+60	3.121	R5-1	Do Not Enter		36 x 36	White	Red	XI	9.00	Std w/ Soil Plate							1									
S-20	RT	6	110+71	3.140	R5-1a	Wrong Way		42 x 30	White	Red	XI	8.75	Std w/ Soil Plate							1									
S-21	--	--	--	--	--	--		--	--	--	--	--							--	--									
S-22	LT	60	110+71	3.142	R5-1a	Wrong Way		42 x 30	White	Red	XI	8.75	Std w/ Soil Plate							2									
	LT				D1-1	Destination (J. Line)		114 x 18	White	Green	XI	14.25	Std w/ Soil Plate	Yes						1									
S-23	RT	4	114+39	3.212	R5-1a	Wrong Way		42 x 30	White	Red	XI	8.75	Std w/ Soil Plate							1									
S-24	RT	70	114+39	3.212	R5-1a	Wrong Way		42 x 30	White	Red	XI	8.75	Std w/ Soil Plate							1									

** SEE PLANS/DETAILS FOR LOCATION

Summary of Items (Sheet 2 of 4)	
SBM Alum Sheet Signs 0.080 INCH	82.50 SQ.FT
SBM Alum Sheet Signs 0.125 INCH	49.25 SQ.FT
Barcode Sign Inventory	23 EACH
Remove & Relocate Sheet Signs	EACH
Remove & Relocate Sign Assemblies	EACH

Summary of Items (Sheet 2 of 4)	
Steel Post - Type 1	174 LF
GMSS Type D	0 EACH
GMSS Type D (Surface Mount)	0 EACH
Class A Concrete for Signs	0 CU YD

Assembley ID		SIGN LOCATION			Facing Traffic Traveling	MUTCD Code	Sign Description	Sign Text / Remarks	Sign Dimensions (in x in)	SHEETING		SBM Alum Sheet Signs 0.080 IN (SQ FT)	SBM Alum Sheet Signs 0.125 IN (SQ FT)	Installation Type	Bracing Req'd	# of Sign Posts	Estimated Length of 2-1/2" Post (ft)	2-1/4" Stiffener Req'd (incndnt to post)	TOTAL Estimated Sign Length (LF)	Barcode Sign Inv. (EACH)
		Approx Offset (ft)	Approx Station	Approx Mile Point						Text/ Symbol Color	Background Color									
S-25	RT	78	116+06	3.243	WEST	R5-1	Do Not Enter		36 x 36	White	Red	XI	9.00	Std w/ Soil Plate		1	13		13	1
S-26	LT	4	116+06	3.243	WEST	R5-1	Do Not Enter		36 x 36	White	Red	XI	9.00	Std w/ Soil Plate		1	16		16	1
S-27	LT	60	116+60	3.243	EAST	R3-4	No U-Turn		36 x 36	Red & Black	White	XI	9.00	Std w/ Soil Plate		1	13		13	1
S-28	LT	48	50+68	3.264	EAST	R5-1	Do Not Enter		36 x 36	White	Red	XI	9.00	Std w/ Soil Plate		1	14		14	1
S-29	LT	**	**	**	NORTH	R6-1R	One Way		36 x 12	Black	White	XI	3.00	Std w/ Soil Plate		1	14		14	1
	LT	**	**	**	NORTH	R1-1	Stop		36 x 36	White	Red	XI	9.00	Std w/ Soil Plate		1	13		13	1
	LT	**	**	**	NORTH	R3-5R	Right Turn ONLY		30 x 36	Black	White	XI	7.50	Std w/ Soil Plate		1	18		18	1
	LT	**	**	**	NORTH	M3-2	East	68	24 x 12	Black	White	XI	4.00	Std w/ Soil Plate	Yes	1	18		18	1
S-30						M1-4	US Route Sign (1 or 2 digit)		24 x 24	Black	White	XI	2.00		Yes					1
						M5-1R	Advance Right Turn Arrow		21 x 15	Black	White	XI	2.19		Yes					1
						M4-5	To		24 x 12	Black	White	XI	2.00		Yes					1
						M3-4	West		24 x 12	Black	White	XI	2.00		Yes					1
						M1-4	US Route Sign (1 or 2 digit)	68	24 x 24	Black	White	XI	4.00		Yes					1
						M5-1R	Advance Right Turn Arrow		21 x 15	Black	White	XI	2.19		Yes					1
	RT	12	117+17	3.264	NORTH	M3-2	East		24 x 12	Black	White	XI	2.00	Std w/ Soil Plate	Yes	1	18		18	1
						M1-4	US Route Sign (1 or 2 digit)	68	24 x 24	Black	White	XI	4.00		Yes					1
						M6-1R	Right Arrow		21 x 15	Black	White	XI	2.19		Yes					1
S-31						M4-5	To		24 x 12	Black	White	XI	2.00		Yes					1
						M3-4	West		24 x 12	Black	White	XI	2.00		Yes					1
						M1-4	US Route Sign (1 or 2 digit)	68	24 x 24	Black	White	XI	4.00		Yes					1
						M6-1R	Right Arrow		21 x 15	Black	White	XI	2.19		Yes					1
						R6-1R	One Way		36 x 12	Black	White	XI	3.00		Yes					1

** SEE PLANS/DETAILS FOR LOCATION

Summary of Items (Sheet 3 of 4)	
SBM Alum Sheet Signs 0.080 INCH	95.25 SQ.FT
SBM Alum Sheet Signs 0.125 INCH	0.00 SQ.FT
Barcode Sign Inventory	22 EACH
Remove & Relocate Sheet Signs	EACH
Remove & Relocate Sign Assemblies	EACH

Summary of Items (Sheet 3 of 4)	
Steel Post - Type 1	105 LF
GMSS Type D	0 EACH
GMSS Type D (Surface Mount)	0 EACH
Class A Concrete for Signs	0 CU.YD

COMMONWEALTH OF KENTUCKY
DEPARTMENT OF HIGHWAYS

DRAWING TITLE: SIGNING SUMMARY SHEET 3

ITEM NO. 03-95.00
SHEET NO. R20

COURTY OF WARREN

SIGN LOCATION		WARREN County					Route US 68													
Assemlly ID	Side of Road	Approx Offset (ft)	Approx Station	Approx. Mile Point	Facing Traffic Traveling	MUTCD Code	Sign Description	Sign Text / Remarks	Sign Dimensions (in x in)	SHEETING		SBM Alum Sheet Signs (SQ FT)	SBM Alum Sheet Signs 0.125 IN (SQ FT)	Installation Type	Bracing Req'd	# of Sign Posts	Estimated Length of 2-1/2" Post (ft)	Estimated Length of Stiffener Req'd (includ to post)	TOTAL Estimated Sign Post Length (LF)	Barcode Sign Inv. (EACH)
										Text/Symbol Color	Background Color									
S-32	RT	8	117+17	3.264	WEST	R3-4	No U-Turn		36 x 36	Red & Black	White	9.00	9.00	Strnd w/ Soil Plate		1	16		16	1
S-33	--	--	--	--	--	R5-1	Do Not Enter		36 x 36	White	--	--	--		--	--	--	--	--	--
S-34	LT	59	118+00	3.280	EAST	R5-1a	Wrong Way		42 x 30	White	Red	8.75	8.75	Type D	Yes	1	16		16	1
	LT	59	118+00	3.280	WEST	M1-5a	State Route Sign (3 or 4 digit)	242	45 x 36	Black	White	11.25	11.25							
	LT	59	118+00	3.280	WEST	M6-3L	Left Arrow		30 x 21	Black	White	4.38	4.38							
S-35	--	--	--	--	--	M3-4			36 x 18	Black	White	--	--		--	--	--	--	--	--
S-36	RT	4	119+23	3.303	EAST	M3-4	West		36 x 18	Black	White	4.50	4.50	Type D	Yes	1	17		17	1
						M1-4	US Route Sign (1 or 2 digit)	68	36 x 36	Black	White	9.00	9.00							
						M6-2L	Upward Left Diagonal Arrow		30 x 21	Black	White	4.38	4.38							
S-37	LT	62	122+18	3.359	WEST	M1-5a	State Route Sign (3 or 4 digit)	242	45 x 36	Black	White	11.25	11.25	Type D	Yes	1	16		16	1
	LT	64	124+31	3.399	WEST	M2-1	Upward Left Diagonal Arrow		30 x 21	Black	White	4.38	4.38							
	LT	64	124+31	3.399	WEST	M2-1	Junction		30 x 21	Black	White	4.38	4.38	Type D	Yes	1	16		16	1
S-38	LT	2	127+29	3.456	EAST	M1-5a	State Route Sign (3 or 4 digit)	242	45 x 36	Black	White	11.25	11.25							
	LT	2	127+29	3.456	EAST	M3-4	West		36 x 18	Black	White	4.50	4.50	Type D	Yes	1	17		17	1
S-39						M1-4	US Route Sign (1 or 2 digit)	68	36 x 36	Black	White	9.00	9.00							
						MK-XX	U-Turn Arrow		30 x 21	Black	White	4.38	4.38							
S-40	LT	88	127+68	3.463	EAST	R6-1L	One Way		54 x 18	Black	White	6.75	6.75	Strnd w/ Soil Plate		2	12		24	1
S-41	RT	68	128+40	3.477	EAST	M3-2	East		36 x 18	Black	White	4.50	4.50	Type D		1	15		15	1
S-42	LT	61	128+50	3.479	EAST	M1-4	US Route Sign (1 or 2 digit)	68	36 x 36	Black	White	9.00	9.00							
	LT	0	128+50	3.479	WEST	R5-1	Do Not Enter		36 x 36	White	Red	9.00	9.00	Strnd w/ Soil Plate		1	13		13	1
	LT	0	128+50	3.479	WEST	R3-4	No U-Turn		36 x 36	Red & Black	White	9.00	9.00	Strnd w/ Soil Plate		1	16		16	1
S-44						R5-1	Do Not Enter		36 x 36	White	Red	9.00	9.00							
S-45	LT	62	129+50	3.498	EAST	R5-1a	Wrong Way		42 x 30	White	Red	8.75	8.75	Strnd w/ Soil Plate		1	13		13	1
S-46	RT	73	110+95	3.147	EAST	M2-1	Junction		30 x 21	Black	White	4.38	4.38	Type D	Yes	1	12		12	1
	RT	62	115+96	3.241	EAST	M1-5a	State Route Sign (3 or 4 digit)		45 x 36	Black	White	11.25	11.25							
	RT	62	115+96	3.241	EAST	M1-5a	State Route Sign (3 or 4 digit)		45 x 36	Black	White	11.25	11.25	Type D	Yes	1	12		12	1
	LT	62	114+98	3.223	WEST	M6-1R	Right Arrow		30 x 21	Black	White	4.38	4.38							
S-48	LT	62	114+98	3.223	WEST	M3-4	West		36 x 18	Black	White	4.50	4.50	Type D	Yes	1	12		12	1
	LT	62	114+98	3.223	WEST	M1-4	US Route Sign (1 or 2 digit)		36 x 36	Black	White	9.00	9.00							

Summary of Items (Sheet 4 of 4)			
SBM Alum Sheet Signs 0.080 INCH	129.63	SQ FT	LF
SBM Alum Sheet Signs 0.125 INCH	89.25	SQ FT	EACH
Barcode Sign Inventory	29	EACH	EACH
Remove & Relocate Sheet Signs		EACH	CU YD
Remove & Relocate Sign Assemblies		EACH	CU YD

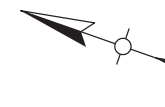
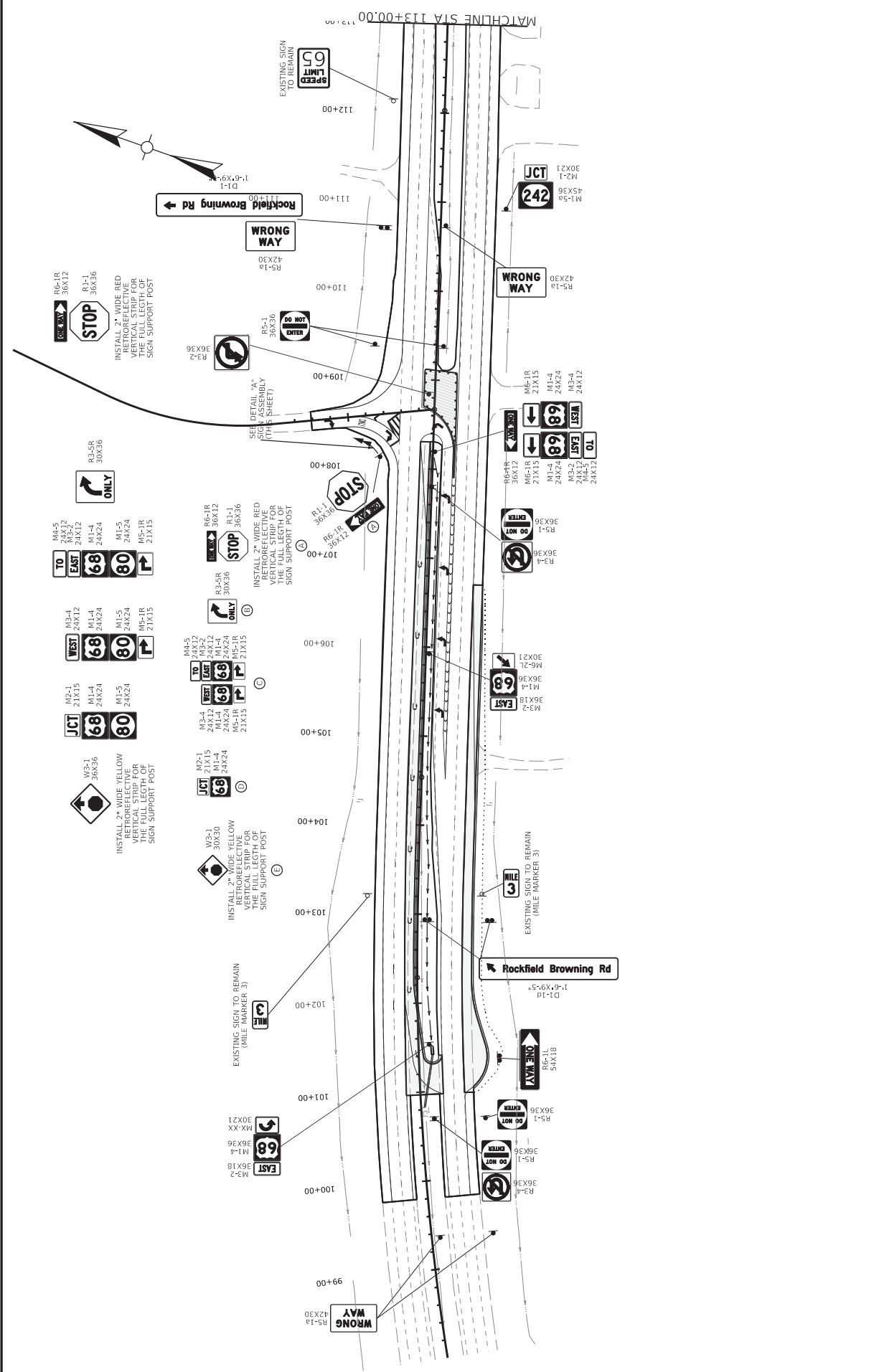
Total Summary of Items			
SBM Alum Sheet Signs 0.080 INCH	404.32	SQ FT	LF
SBM Alum Sheet Signs 0.125 INCH	191.01	SQ FT	EACH
Barcode Sign Inventory	96	EACH	EACH
Remove & Relocate Sheet Signs		EACH	CU YD
Remove & Relocate Sign Assemblies		EACH	CU YD

COMMONWEALTH OF KENTUCKY DEPARTMENT OF HIGHWAYS

DRAWING TITLE: SIGNING SUMMARY SHEET 4

ITEM NO. 03-3500 SHEET NO. R21 COUNTY OF WARREN

OPERATIONS Designer V10.10.2017 USER: RCRB FILE NAME: C:\BWS\BWS-PC\HW\DWSP_DAL\CRCD095151\B2R21 - US 68 ROUT SIGNING SUMMARY SHEETS 11X17.DWG



HORIZONTAL SCALE
SCALE: 1"=50'

DRAWING TITLE: SIGNING PLANS

COMMONWEALTH OF KENTUCKY
DEPARTMENT OF HIGHWAYS

COUNTY OF
WARREN

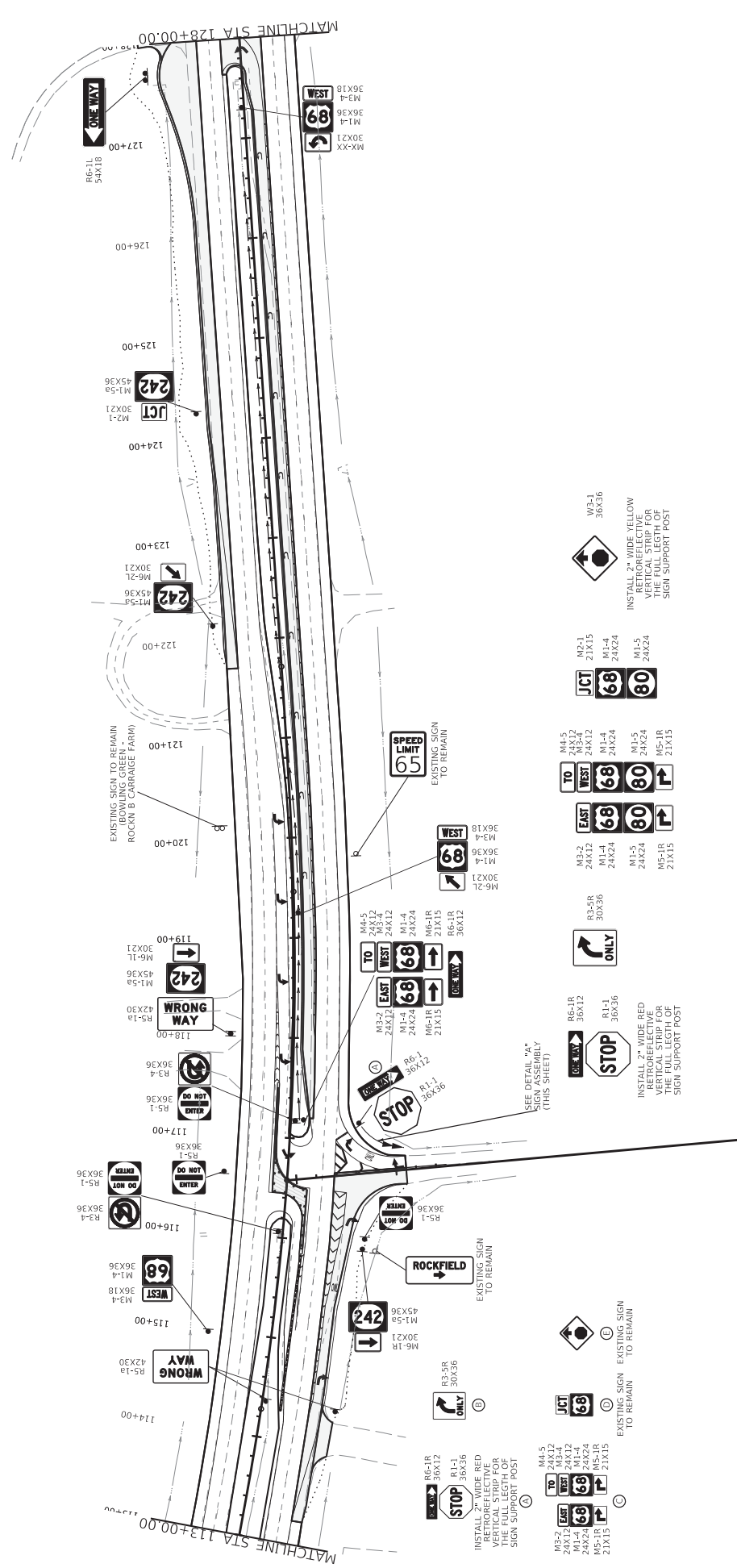
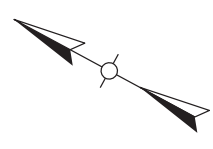
ITEM NO.
03-9500

SHEET NO.
R28

STA 98+00 TO 113+00

FILE NAME: C:\BIS\MS\PELUS\HW2\065_000\ARC\0095818R28R00 - US 86 RCT SIGNING PLANS T1X17.DGN

USER: R28M



ITEM NO. P-6W
03-9500
SHEET NO.
R29

COUNTY OF
WARREN

STA 113+00 TO 128+00

HORIZONTAL SCALE
SCALE: 1"=50'

200'
100'
50'
0'

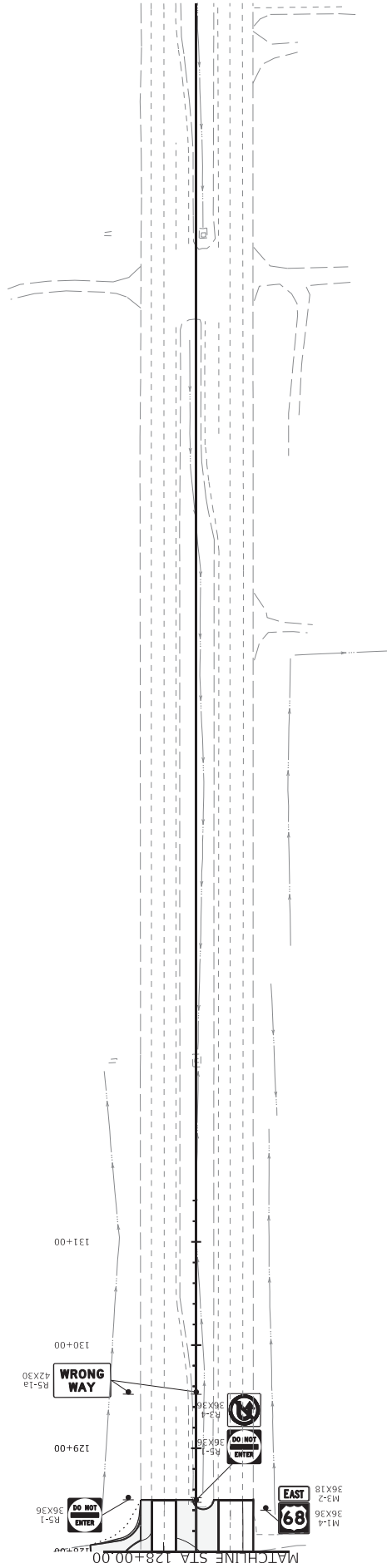
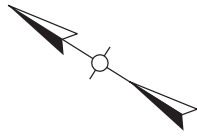
DRAWING TITLE: SIGNING PLANS

COMMONWEALTH OF KENTUCKY
DEPARTMENT OF HIGHWAYS

FILE NAME: C:\BMS\MS-USA\2008\651526260 - US 88 RCUT SIGNING PLANS 11X17.DGN
USER: vrf/2650



OpenRoads Designer v10.16.2.287



ITEM NO.
03-9500
SHEET NO.
R30

COUNTY OF
WARREN



HORIZONTAL SCALE
SCALE: 1"=50'

DRAWING TITLE: SIGNING PLANS



FILE NAME: C:\BMS\WSP\JSP\W2009\61516\RS3 - US 88 R/CUT SIGNING PLANS 11X17.DGN

USER: uaf/25830

OpenRoads Designer v10.16.2.267

PROPOSAL BID ITEMS

254502

Page 1 of 2

Report Date 2/18/25

Section: 0001 - PAVING

LINE	BID CODE	ALT	DESCRIPTION	QUANTITY	UNIT	UNIT PRIC	FP	AMOUNT
0010	00003		CRUSHED STONE BASE	4,199.00	TON		\$	
0020	00100		ASPHALT SEAL AGGREGATE	23.00	TON		\$	
0030	00103		ASPHALT SEAL COAT	3.00	TON		\$	
0040	00190		LEVELING & WEDGING PG64-22	212.00	TON		\$	
0050	00217		CL4 ASPH BASE 1.00D PG64-22	3,460.00	TON		\$	
0060	00337		CL4 ASPH SURF 0.38B PG76-22	2,623.00	TON		\$	
0070	02676		MOBILIZATION FOR MILL & TEXT	1.00	LS		\$	
0080	02677		ASPHALT PAVE MILLING & TEXTURING	2,099.00	TON		\$	
0090	20071EC		JOINT ADHESIVE	3,074.00	LF		\$	
0100	24970EC		ASPHALT MATERIAL FOR TACK NON-TRACKING	13.00	TON		\$	

Section: 0002 - ROADWAY

LINE	BID CODE	ALT	DESCRIPTION	QUANTITY	UNIT	UNIT PRIC	FP	AMOUNT
0110	01921		STANDARD BARRIER MEDIAN TYPE 4	351.00	SQYD		\$	
0120	02200		ROADWAY EXCAVATION	2,376.00	CUYD		\$	
0130	02562		TEMPORARY SIGNS	328.00	SQFT		\$	
0140	02604		FABRIC-GEOTEXTILE CLASS 1A	5,974.00	SQYD		\$	
0150	02650		MAINTAIN & CONTROL TRAFFIC WARREN US 68 HSIP	1.00	LS		\$	
0160	02671		PORTABLE CHANGEABLE MESSAGE SIGN	4.00	EACH		\$	
0170	02696		SHOULDER RUMBLE STRIPS	11,504.00	LF		\$	
0180	02701		TEMP SILT FENCE	5,752.00	LF		\$	
0190	02703		SILT TRAP TYPE A	4.00	EACH		\$	
0200	02704		SILT TRAP TYPE B	4.00	EACH		\$	
0210	02705		SILT TRAP TYPE C	4.00	EACH		\$	
0220	02706		CLEAN SILT TRAP TYPE A	12.00	EACH		\$	
0230	02707		CLEAN SILT TRAP TYPE B	12.00	EACH		\$	
0240	02708		CLEAN SILT TRAP TYPE C	12.00	EACH		\$	
0250	02726		STAKING WARREN US 68 HSIP	1.00	LS		\$	
0260	02775		ARROW PANEL	4.00	EACH		\$	
0270	03225		TUBULAR MARKERS	45.00	EACH		\$	
0280	05950		EROSION CONTROL BLANKET	750.00	SQYD		\$	
0290	05952		TEMP MULCH	4,225.00	SQYD		\$	
0300	05953		TEMP SEEDING AND PROTECTION	4,225.00	SQYD		\$	
0310	05963		INITIAL FERTILIZER	1.00	TON		\$	
0320	05964		MAINTENANCE FERTILIZER	1.00	TON		\$	
0330	05985		SEEDING AND PROTECTION	4,225.00	SQYD		\$	
0340	05992		AGRICULTURAL LIMESTONE	3.00	TON		\$	
0350	06511		PAVE STRIPING-TEMP PAINT-6 IN	17,560.00	LF		\$	
0360	06542		PAVE STRIPING-THERMO-6 IN W	11,384.00	LF		\$	
0370	06543		PAVE STRIPING-THERMO-6 IN Y	6,329.00	LF		\$	
0380	06568		PAVE MARKING-THERMO STOP BAR-24IN	26.00	LF		\$	
0390	06574		PAVE MARKING-THERMO CURV ARROW	18.00	EACH		\$	
0400	06576		PAVE MARKING-THERMO ONLY	3.00	EACH		\$	

PROPOSAL BID ITEMS

254502

Page 2 of 2

Report Date 2/18/25

LINE	BID CODE	ALT	DESCRIPTION	QUANTITY	UNIT	UNIT PRIC	FP	AMOUNT
0410	10020NS		FUEL ADJUSTMENT	9,798.00	DOLL	\$1.00	\$	\$9,798.00
0420	10030NS		ASPHALT ADJUSTMENT	24,611.00	DOLL	\$1.00	\$	\$24,611.00
0430	21289ED		LONGITUDINAL EDGE KEY	3,510.00	LF		\$	
0440	22680EN		QWICK CURB MEDIAN SEPARATOR	157.00	LF		\$	
0450	24489EC		INLAID PAVEMENT MARKER	141.00	EACH		\$	
0460	24679ED		PAVE MARK THERMO CHEVRON	632.00	SQFT		\$	
0470	24889EC		PAVE MARKING-THERMO U-TURN	17.00	EACH		\$	
0480	24969ED		LONGITUDINAL SAW CUT	3,510.00	LF		\$	

Section: 0003 - DRAINAGE

LINE	BID CODE	ALT	DESCRIPTION	QUANTITY	UNIT	UNIT PRIC	FP	AMOUNT
0490	00462		CULVERT PIPE-18 IN	61.00	LF		\$	
0500	21541NN		CORED HOLE DRAINAGE BOX CON- 18 IN	1.00	EACH		\$	
0510	26131ED		SLOPED AND MITERED HEADWALL-18 IN	1.00	EACH		\$	

Section: 0004 - SIGNING

LINE	BID CODE	ALT	DESCRIPTION	QUANTITY	UNIT	UNIT PRIC	FP	AMOUNT
0520	06406		SBM ALUM SHEET SIGNS .080 IN (REVISED 2-18-25)	404.32	SQFT		\$	
0530	06407		SBM ALUM SHEET SIGNS .125 IN (REVISED 2-18-25)	191.01	SQFT		\$	
0540	06410		STEEL POST TYPE 1 (REVISED 2-18-25)	703.00	LF		\$	
0545	06490		CLASS A CONCRETE FOR SIGNS (ADDED 2-18-25)	2.75	CUYD		\$	
0548	21596ND		GMSS TYPE D (ADDED 2-18-25)	11.00	EACH		\$	
0550	24631EC		BARCODE SIGN INVENTORY (REVISED 2-18-25)	96.00	EACH		\$	

Section: 0005 - DEMOBILIZATION

LINE	BID CODE	ALT	DESCRIPTION	QUANTITY	UNIT	UNIT PRIC	FP	AMOUNT
0560	02569		DEMOBILIZATION	1.00	LS		\$	